



WATERSTREET
COMPANY

Business **Intelligence** for Underwriting



WaterStreet Business Intelligence enables underwriters to confidently act upon massive amounts of data related to customer credit history, risks, market information, and more.

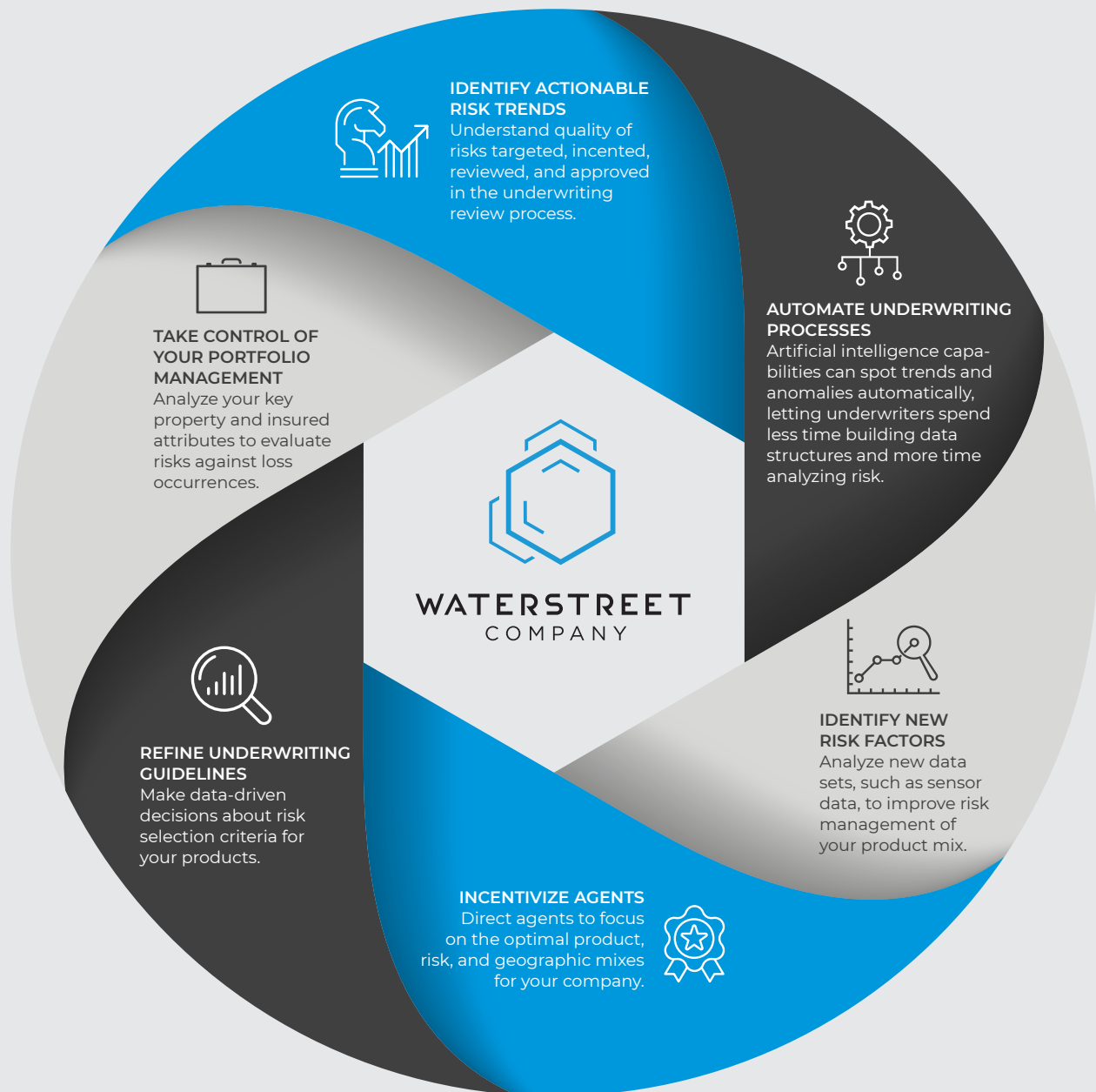
WaterStreet enables insurance management to analyze operations with pre-built and ad hoc reports, dashboards, and scenario modeling using standard insurance calculations. The ability to seamlessly drill down into multiple directions within the data with insightful graphic renderings brings the data alive and helps decision-makers identify opportunities and risks.



Business **Intelligence** for Underwriting

The policy management and underwriting process relies on an incredible amount of data which processors and underwriters sift through on a daily basis—From adjusters' hand-written notes, to data from fraud lists, to information stored in claims management databases. The accuracy of underwriter calculations is a critical factor in the success of the insurance company; if the calculations aren't precise, the company runs the risk of being overpriced in comparison to the market or even suffering significant losses from unexpected claims payouts.

Empower your Underwriting Workflow with WaterStreet



DO MORE. STARTING NOW.

Data Model Tailored to the P&C Insurance Industry

Most horizontal solutions offer a one-size-fits-all approach that is too generic to provide the policy detail that you need and limits analysis capabilities. Our insurance data warehouse model design follows industry-proven dimension- modeling standards, and stores data at the lowest possible level of granularity. Concise policy information is detailed down to the coverage and risk parameter level. Claim information includes individual payments, historical reserve estimates and full tracking of claim status changes. The WaterStreet Business Intelligence insurance data model was built for P&C insurance from the ground up, and therefore is highly optimized for fast and flexible insurance-specific queries.

WaterStreet Advantage



Key Data Insights

WaterStreet provides many out-of-the-box reports which are critical to running an insurance business effectively. Our extensive library of reports and dashboards takes advantage of a rich data model to provide reporting at levels most carriers cannot access. Even better, standard reports can be quickly customized to company-specific needs.



Industry Data Experts

Our configuration engineers and data analysts are all AIDA certified through the institutes and continuously work to improve data models to better serve the P&C industry.



WaterStreet Understands Your Business

We know the challenges that carriers face in managing business because we come from the insurance industry. We draw upon decades of knowledge and first-hand experiences to bring you industry best practices.

Helping insurance companies for over **20 years.**

Founded in 2000, WaterStreet is a company of property & casualty insurance industry experts passionate about transforming and optimizing our clients' operations through remarkable customer experience, workflow optimization, and cutting-edge technology to grow with our customers as they achieve success. We offer a cloud-based P&C insurance platform along with a suite of policy administration services to our clients to help them scale and grow their business optimally.

**DO MORE.
STARTING NOW.**



WATERSTREET
COMPANY

www.waterstreetcompany.com 

info@waterstreetcompany.com 

406.333.1989 

215 S Complex Drive, Kalispell, MT 59901 



Copyright ©2022 WaterStreet Company, Inc. All rights reserved. Any and all product name(s) and content(s) mentioned in this document are the property of their respective owners. This document may also include trademarks, trade names, and service marks of companies other than WaterStreet Company, Inc. Permission in writing to copy, reprint, republish and/or distribute this document in whole or in part hereof for any purposes must be obtained in advance by an authorized officer from WaterStreet Company, Inc.