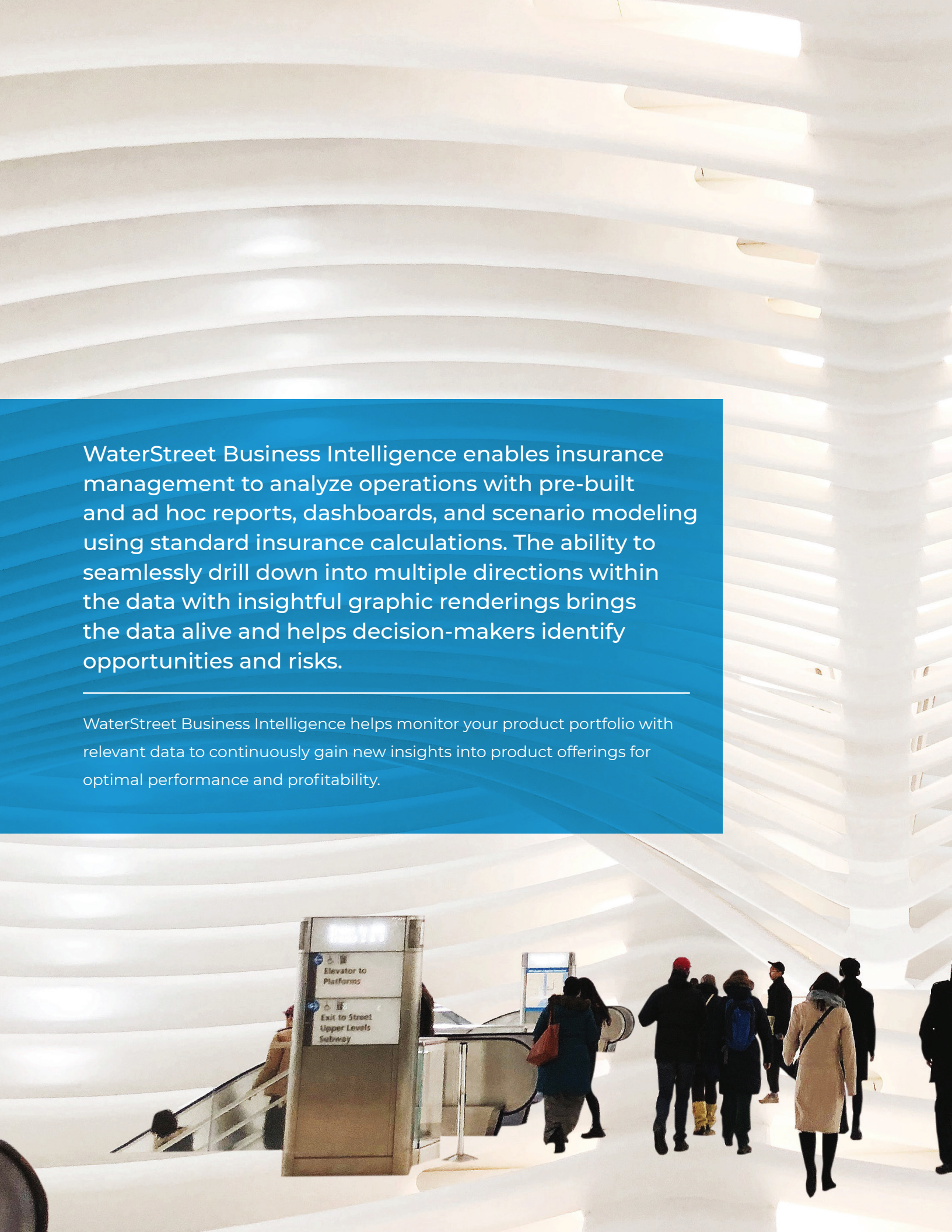




WATERSTREET  
COMPANY

# Business **Intelligence** for Product Management





WaterStreet Business Intelligence enables insurance management to analyze operations with pre-built and ad hoc reports, dashboards, and scenario modeling using standard insurance calculations. The ability to seamlessly drill down into multiple directions within the data with insightful graphic renderings brings the data alive and helps decision-makers identify opportunities and risks.

---

WaterStreet Business Intelligence helps monitor your product portfolio with relevant data to continuously gain new insights into product offerings for optimal performance and profitability.





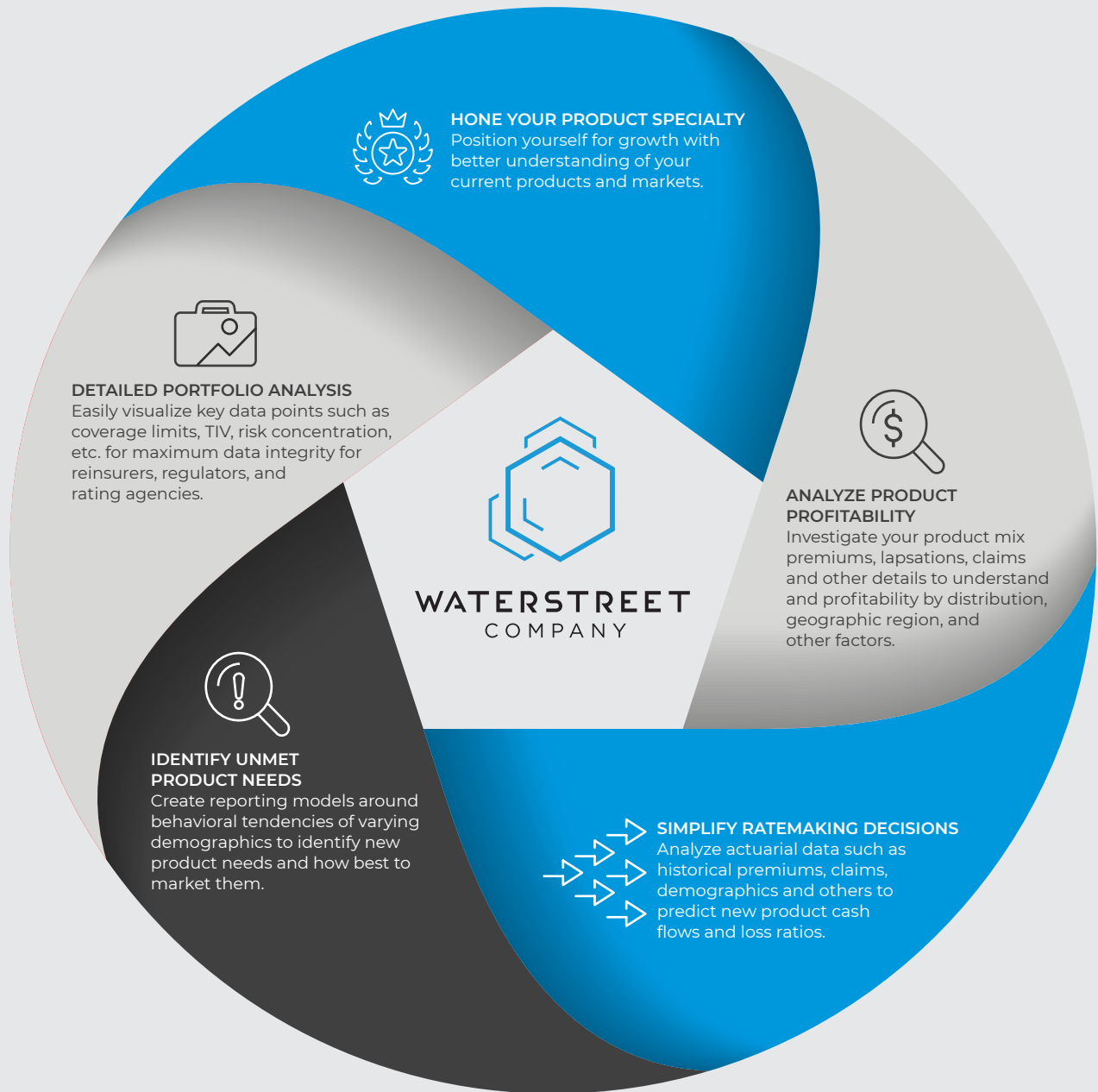


# Business **Intelligence** for Product Management

---

Insurance product managers set and direct the development of new insurance products, following the product lifecycle policy and the general insurance strategy. They are tasked with analyzing data around market trends for product needs as well as understanding what factors will affect consumer confidence in future product offerings. Understanding the supporting market data is imperative to the success of future product launches.

# Empower Portfolio Management Workflow with WaterStreet



**DO MORE. STARTING NOW.**

## Data Model Tailored to the P&C Insurance Industry

---

Most horizontal solutions offer a one-size-fits-all approach that is too generic to provide the policy detail that you need and limits analysis capabilities. Our insurance data warehouse model design follows industry-proven dimension- modeling standards, and stores data at the lowest possible level of granularity. Concise policy information is detailed down to the coverage and risk parameter level. Claim information includes individual payments, historical reserve estimates and full tracking of claim status changes.

The WaterStreet Business Intelligence insurance data model was built for P&C insurance from the ground up, and therefore is highly optimized for fast and flexible insurance-specific queries. A lot of work and effort has been put into each calculation method, index, fact table and other data structures to achieve a highly efficient yet standards-compliant P&C insurance data warehouse.

## WaterStreet Advantage

---



### Key Data Insights

WaterStreet provides many out-of-the-box reports which are critical to running an insurance business effectively. Our extensive library of reports and dashboards takes advantage of a rich data model to provide reporting at levels most carriers cannot access. Even better, standard reports can be quickly customized to company-specific needs.



### Industry Data Experts

Our configuration engineers and data analysts are all AIDA certified through the institutes and continuously work to improve data models to better serve the P&C industry.



### WaterStreet Understands Your Business

We know the challenges that carriers face in managing business because we come from the insurance industry. We draw upon decades of knowledge and first-hand experiences to bring you industry best practices.

# Helping insurance companies for over **20 years.**

---

Founded in 2000, WaterStreet is a company of property & casualty insurance industry experts passionate about transforming and optimizing our clients' operations through remarkable customer experience, workflow optimization, and cutting-edge technology to grow with our customers as they achieve success. We offer a cloud-based P&C insurance platform along with a suite of policy administration services to our clients to help them scale and grow their business optimally.

**DO MORE.  
STARTING NOW.**



**WATERSTREET**  
COMPANY

[www.waterstreetcompany.com](http://www.waterstreetcompany.com) 

[info@waterstreetcompany.com](mailto:info@waterstreetcompany.com) 

406.333.1989 

215 S Complex Drive, Kalispell, MT 59901 



Copyright ©2022 WaterStreet Company, Inc. All rights reserved. Any and all product name(s) and content(s) mentioned in this document are the property of their respective owners. This document may also include trademarks, trade names, and service marks of companies other than WaterStreet Company, Inc. Permission in writing to copy, reprint, republish and/or distribute this document in whole or in part hereof for any purposes must be obtained in advance by an authorized officer from WaterStreet Company, Inc.